

## Waterproof series connector



**Waterproof 1510 series**

Waterproof 1510 series connector product are available to meet Industry 4.0 automation control equipment. Can be used at Signal Transmission, Power, Sensor and Cable Connection.

IP67 Waterproof.

**Specification**

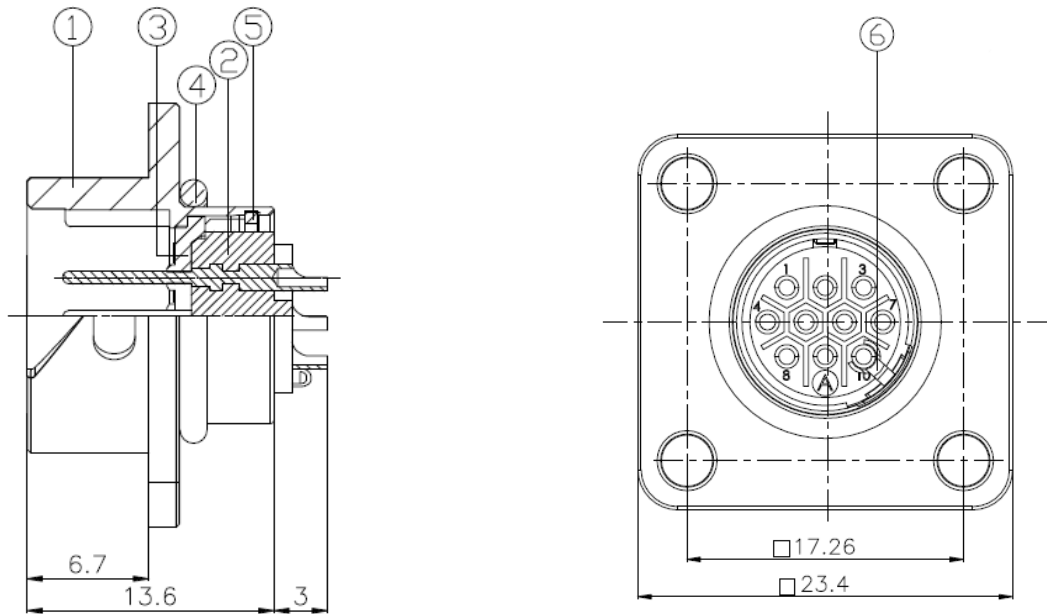
JPC Product Name	PZAACWPMC15101/ PZAACWPMB15101
Product Series	Waterproof 1510 series connector
Connector Type	Plug Male/Female
Shell Size	1510
No. Of Contact	10 Pin
Operation limit voltage	200
Withstanding Voltage	900
Insulation Resistance	1000

**Application**

Servo Motors	Automobiles
Power	Electric Vehicles
Electronics & Electrical	Communication Equipment
Mechanical	Military Applications
Medical Equipment	Industrial Application

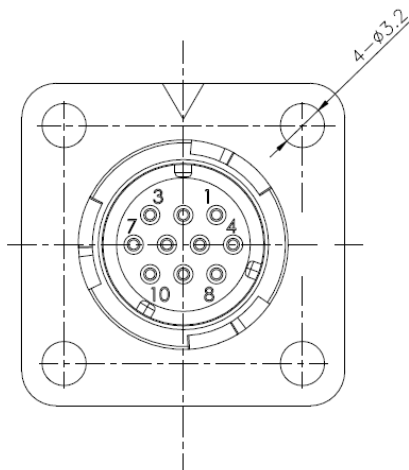
## Waterproof 1510 series

### Receptacle Interface Dimensions



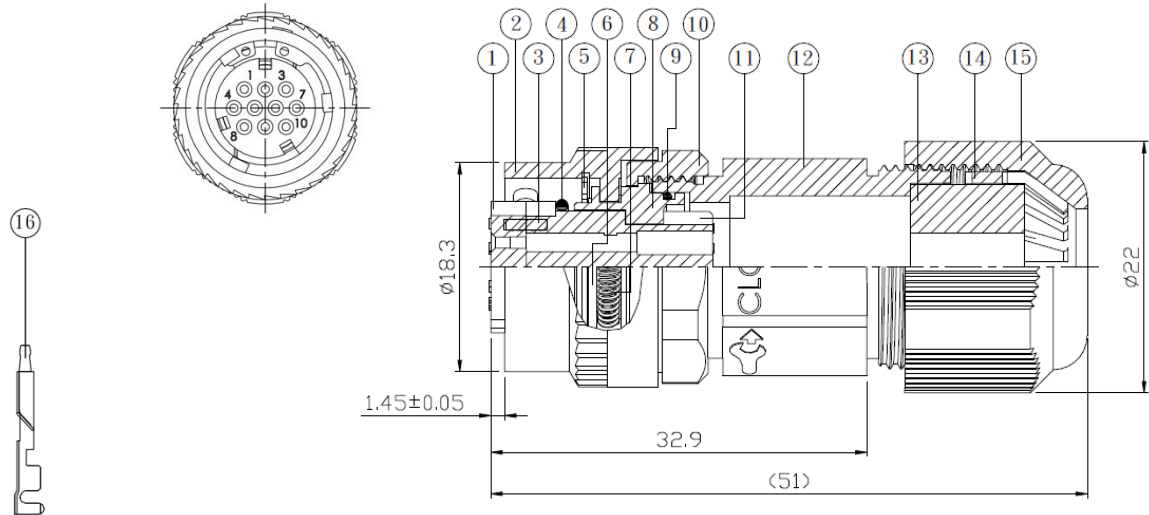
### Product Material

1.BODY	3.05M
2. INSULATOR	PBT+15%GF C3604
3.WASHER	RUBBER
4.O RING	RUBBER NBR
5.EATH BLATE	COPPER ALLOY
6.BUCKLE	Phosphor Bronze



## Waterproof 1510 series

### Plug Interface Dimensions



### Product Material

1.INSULATOR	PLASTIC
2.CAP	SDC12
3.BOSS	C3604BD
4.O-RING	RUBBER
5.C-RING	Stainless Steel
6.WASHER	PLASTIC
7.SPRING	SUP3
8.BODY	SDC2
9.O-RING	RUBBER
10.NUT	COPPER ALLOW
11.INSULATOR	DOPONT NEPORENE
12.BODY	SDC2
13.PIPE	RUBBER
14.CLAMP	PLASTIC
15.NUT	PLASTIC
16.CONTACT	COPPER ALLOW